

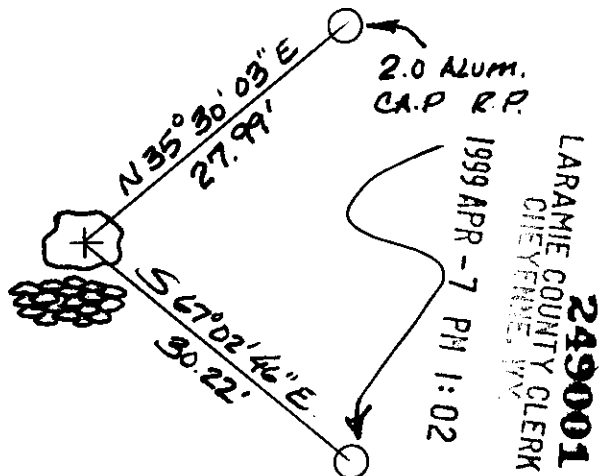
State of Wyoming Corner Record

(In compliance with the *CORNER PERPETUATION AND FILING ACT*, Wyoming Statutes, 1997 Section 33-29-140 et. seq., and the Rules and Regulations of the Board of Professional Engineers and Professional Land Surveyors)

Reverse side of this form may be used if more space is needed.

Record of original survey and citation of source of historical information (if corner is lost or obliterated). Description of corner monumentation evidence found and/or monument and accessories established to perpetuate the location of this corner. Sketch of relative location of monument, accessories, and reference points with course and distance to adjacent corner(s) (if determined in this survey). Method and rationale for re-establishment of lost or obliterated corner.

RED GRANITE STONE
6" x 5" x 3" ABOVE GROUND
MARKED 5 NOTCHES ON
THE EAST AND "S" ON
THE NORTH. A ROCK PILE
IS TO THE SOUTH. SET
TPOST 1.0 FT NORTH.

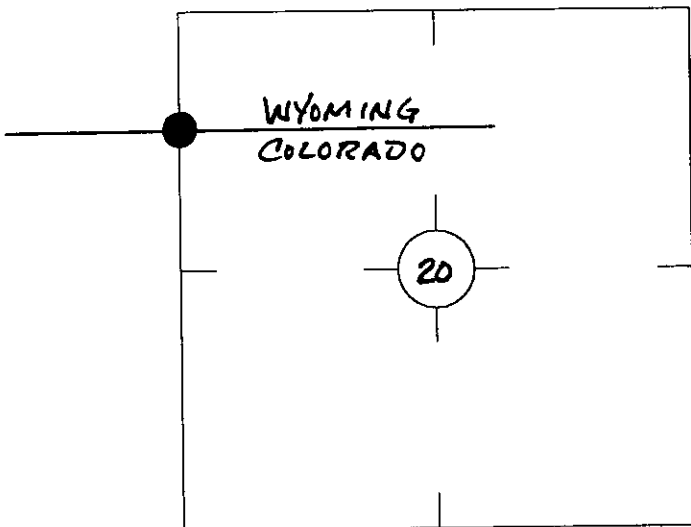


LARAMIE COUNTY CLERK
 CHEYENNE, WY
249001
 1999 APR -7 PM 1:02

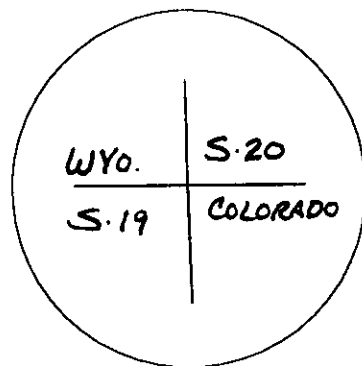
Project Coordinate: North 181622.34

Project Coordinate: East 722859.22

Monument location



NOT INSCRIBED



Monument Inscription

Date of Field Work: AUG 14, 1998

Office Reference: IME 8418 RS, PT #1142

Cross Index Plat

1	2	3	4	5	6	7	8	9	10	11	12	13	14	15	16	17	18	19	20	21	22	23	24	25	
A	+	+	+	+	+	+	+	+	+	+	+	+	+	+	+	+	+	+	+	+	+	+	+	+	B
B	+	6	+	5	+	4	+	3	+	2	+	1	+	C											D
C	+	+	+	+	+	+	+	+	+	+	+	+	+	E											F
D	+	+	+	+	+	+	+	+	+	+	+	+	+	G											H
E	+	+	+	+	+	+	+	+	+	+	+	+	+	F											G
F	+	7	+	8	+	9	+	10	+	11	+	12	+	H											I
G	+	+	+	+	+	+	+	+	+	+	+	+	+	J											K
H	+	+	+	+	+	+	+	+	+	+	+	+	+	I											L
I	+	+	+	+	+	+	+	+	+	+	+	+	+	J											M
J	+	+	+	+	+	+	+	+	+	+	+	+	+	K											N
K	+	18	+	17	+	16	+	15	+	14	+	13	+	L											O
L	+	+	+	+	+	+	+	+	+	+	+	+	+	M											P
M	+	+	+	+	+	+	+	+	+	+	+	+	+	N											Q
N	+	+	+	+	+	+	+	+	+	+	+	+	+	O											R
O	+	+	+	+	+	+	+	+	+	+	+	+	+	P											S
P	+	19	+	20	+	21	+	22	+	23	+	24	+	Q											T
Q	+	+	+	+	+	+	+	+	+	+	+	+	+	R											U
R	+	+	+	+	+	+	+	+	+	+	+	+	+	S											V
S	+	+	+	+	+	+	+	+	+	+	+	+	+	T											W
T	+	30	+	29	+	28	+	27	+	26	+	25	+	U											X
U	+	+	+	+	+	+	+	+	+	+	+	+	+	V											Y
V	+	+	+	+	+	+	+	+	+	+	+	+	+	W											Z
W	+	+	+	+	+	+	+	+	+	+	+	+	+	X											
X	+	31	+	32	+	33	+	34	+	35	+	36	+	Y											
Y	+	+	+	+	+	+	+	+	+	+	+	+	+	Z											
Z	+	+	+	+	+	+	+	+	+	+	+	+	+												
	1	2	3	4	5	6	7	8	9	10	11	12	13	14	15	16	17	18	19	20	21	22	23	24	25

Firm/Agency, Address

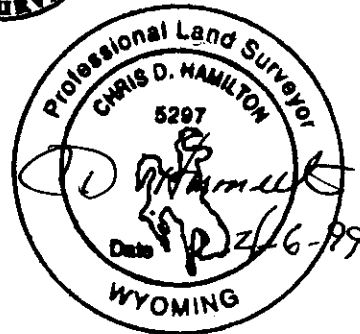
this corner record provided by:
**HAMILTON
 LAND
 SURVEYING**

102 West Remick, Sta. 201
 Dubois, WY: 307-455-2070
A WYOMING COMPANY PROVIDING
 COMMERCIAL - RESIDENTIAL - INDUSTRIAL
 OIL & GAS - WATER RIGHTS - CONSTRUCTION
 AND SUBDIVISION LAND SURVEYING SERVICES



This corner record was prepared by me or under my direction and supervision.

SEAL & SIGNATURE



County: LARAMIE, Wyoming

Corner Name: STATE LINE, Section: 19/20, T 12N, R 67W, 6th P.M., Cross-Index No.: PQ-5

SBRPEPLS/PLSW: March 1994; PLSW January 1998